

Cardiac PET/CT

Positron Emission Tomography -
Computed Tomography

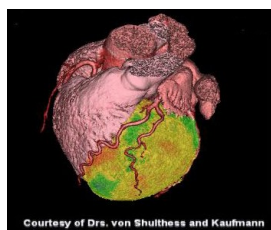


Patient Instruction:

- **No Caffeine or decaf 12 hours before the test**
- **You may take your medications unless instructed not to.**

Patient Benefits

- Lower radiation exposure
- 3.5mSv vs. 18 mSv for SPECT
- Greater diagnostic accuracy regardless of patient status
- Appointment times reduced to 30-45 minutes
- Improved patient outcomes i.e. lower false positives
- Coronary Calcium detection
- Myocardial viability studies
- Wall motion during ischemia



Cardiovascular MRI

Magnetic Resonance Imaging



Patient Benefits

- NO radiation exposure
- Myocardial viability & infarction studies
- Superb cardiac morphology imaging
- Myocardial Perfusion studies
- Cardiac valve function for stenosis or regurgitation
- Congenital heart disease studies



Coronary CTA

Computed Tomography Angiography



Patient Instruction:

- **No Caffeine or decaf 12 hours before the test**
- **Patients who do not have a slow heart rate will be instructed to take Toprol XL 100 mg daily for 2 days before and the day of the test.**

Patient Benefits

- Frequently avoids cardiac CATH
- Detection of cardiac anomalies
- Shortens hospitalisation
- Prepares patients for AF ablation
- Low radiation procedure with step & shoot & iDose
- Reduces cost & offers out of pocket pricing of \$199 for the test plus reading fee

